

2011-12 Single Stream Recycling Schedule

My normal collection day is: _____



April 2011						
S	M	T	W	T	F	S
					1	2
3	4	5	6	7	8	9
10	11	12	13	14	15	16
17	18	19	20	21	22	23
24	25	26	27	28	29	30

May 2011						
S	M	T	W	T	F	S
1	2	3	4	5	6	7
8	9	10	11	12	13	14
15	16	17	18	19	20	21
22	23	24	25	26	27	28
29	30	31				

June 2011						
S	M	T	W	T	F	S
			1	2	3	4
5	6	7	8	9	10	11
12	13	14	15	16	17	18
19	20	21	22	23	24	25
26	27	28	29	30		

July 2011						
S	M	T	W	T	F	S
					1	2
3	4	5	6	7	8	9
10	11	12	13	14	15	16
17	18	19	20	21	22	23
24/31	25	26	27	28	29	30

August 2011						
S	M	T	W	T	F	S
	1	2	3	4	5	6
7	8	9	10	11	12	13
14	15	16	17	18	19	20
21	22	23	24	25	26	27
28	29	30	31			

September 2011						
S	M	T	W	T	F	S
				1	2	3
4	5	6	7	8	9	10
11	12	13	14	15	16	17
18	19	20	21	22	23	24
25	26	27	28	29	30	

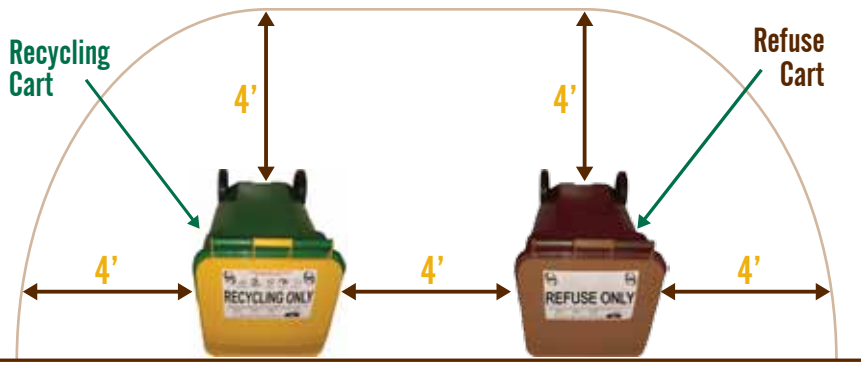
= Recycling Pick-Up

Pick-Up Guidelines

Follow these guidelines to make sure that your refuse and recycling will get picked up!

- Place your containers out by 6 am
- Maintain a 4-foot clearance around carts
- Make sure container lids are closed (do not overfill carts)
- Do not place hazardous waste in refuse/recycle cart (see other side)
- Do not place yard waste or brush in refuse/recycle cart
- Place only designated recycling items in recycle cart (see other side)
- Keep containers clear of snow & ice, maintaining the 4-foot clearance around carts

Avoid this garbage & recycling No-No!



Street/Alley

Contact Us

Holiday Schedule

May '11

30 - Memorial Day (Monday)

Monday through Thursday refuse routes will be delayed by one day. There is no recycling this week.

July '11

4 - Fourth of July (Monday)

Monday through Thursday refuse & recycling routes will be delayed by one day.

September '11

5 - Labor Day (Monday)

Monday through Thursday refuse routes will be delayed by one day. There is no recycling this week.

November '11

11 - Veterans' Day (Friday)

Monday through Thursday refuse & recycling routes will have regular pick up.

24, 25 - Thanksgiving (Thursday & Friday)

Monday through Wednesday refuse & recycling routes will have regular pick up.

Thursday refuse & recycling route will be picked up Wednesday.

December '11

25 - Christmas Day (Sunday)

Monday through Thursday refuse routes will be delayed by one day. There is no recycling this week.

January '12

1 - New Year's Day (Sunday)

Monday through Thursday refuse and recycling routes will be delayed by one day.

16 - Martin Luther King Day (Monday)

Monday through Thursday refuse & recycling routes will be delayed by one day.

February '12

20 - Presidents' Day (Monday)

Monday through Thursday refuse routes will be delayed by one day. There is no recycling this week.

If you have questions regarding the City of Hopkins' solid waste programs, contact the Solid Waste Coordinator at 952-548-6351.

If your recycling or refuse cart needs to be repaired or replaced, contact Public Works at 952-939-1382. To change the size of your recycling or refuse cart, contact 952-935-8474 (refuse cart) or 952-939-1382 (recycling cart).

2011-12 Single Stream Recycling Schedule



October 2011						
S	M	T	W	T	F	S
2	3	4	5	6	7	1/8
9	10	11	12	13	14	15
16	17	18	19	20	21	22
23	24	25	26	27	28	29
30	31					

November 2011						
S	M	T	W	T	F	S
		1	2	3	4	5
6	7	8	9	10	11	12
13	14	15	16	17	18	19
20	21	22	23	24	25	26
27	28	29	30			

December 2011						
S	M	T	W	T	F	S
				1	2	3
4	5	6	7	8	9	10
11	12	13	14	15	16	17
18	19	20	21	22	23	24
25	26	27	28	29	30	31

January 2012						
S	M	T	W	T	F	S
1	2	3	4	5	6	7
8	9	10	11	12	13	14
15	16	17	18	19	20	21
22	23	24	25	26	27	28
29	30	31				

February 2012						
S	M	T	W	T	F	S
			1	2	3	4
5	6	7	8	9	10	11
12	13	14	15	16	17	18
19	20	21	22	23	24	25
26	27	28	29			

March 2012						
S	M	T	W	T	F	S
				1	2	3
4	5	6	7	8	9	10
11	12	13	14	15	16	17
18	19	20	21	22	23	24
25	26	27	28	29	30	31

= Recycling Pick-Up

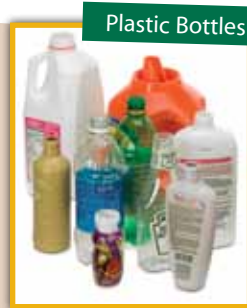


Can I recycle that? *Yes!*

Cut this out!



Aluminum & Steel Cans



Plastic Bottles *

* ONLY BOTTLES WITH NECKS
Don't worry about the numbers.



Brown Paper Bags



Junk Mail & Office Paper



Newspapers



Magazines & Catalogs



Paperboard Cereal Boxes, etc.



Phone Books



Aseptic Containers



Paper Beverage Cartons



Glass Bottles & Jars



Cardboard **

** must be no larger than 2' x 2'

Do not place plastic bags, margarine/yogurt containers, or garbage in your recycling cart.

Recycling FAQ

Is there anywhere to drop off my recycling?

The City of Hopkins shares a self-service Recycle Drop-Off Center with the City of Minnetonka. It is located at 11522 Minnetonka Boulevard on the Minnetonka Public Works Facility site. The Center is open 24 hours a day, 7 days a week. Recyclable materials accepted are the same as those that are collected in our curbside program (see above), however they do need to be source separated, not mixed.

How do I get rid of my hazardous waste (electronics, cleaners, batteries, etc)?

For more information on disposing Household Hazardous Waste, visit the City website, www.hopkinsmn.com, contact the City of Hopkins' Solid Waste Coordinator at 952-548-6351, or call the Hennepin County Household Hazardous Waste Department at 612-348-3777.

Where can I get more information?

Hopkins Highlights

The City newsletter is mailed with your monthly utility bill and contains reminders of refuse and recycling collection dates. It also notifies you about upcoming solid waste events and programs, such as the Bulk Item Drop-Off for Hopkins residential refuse customers in the City service area, and the yard waste and brush pick-up and drop-off programs.

City Website

The City of Hopkins website, www.hopkinsmn.com, is another excellent source of information regarding our solid waste programs.

Contact Public Works

Call 952-939-1382 or visit us at 11100 Excelsior Blvd, Hopkins. Call 952-548-6351 to speak to Hopkins' Solid Waste Coordinator.

